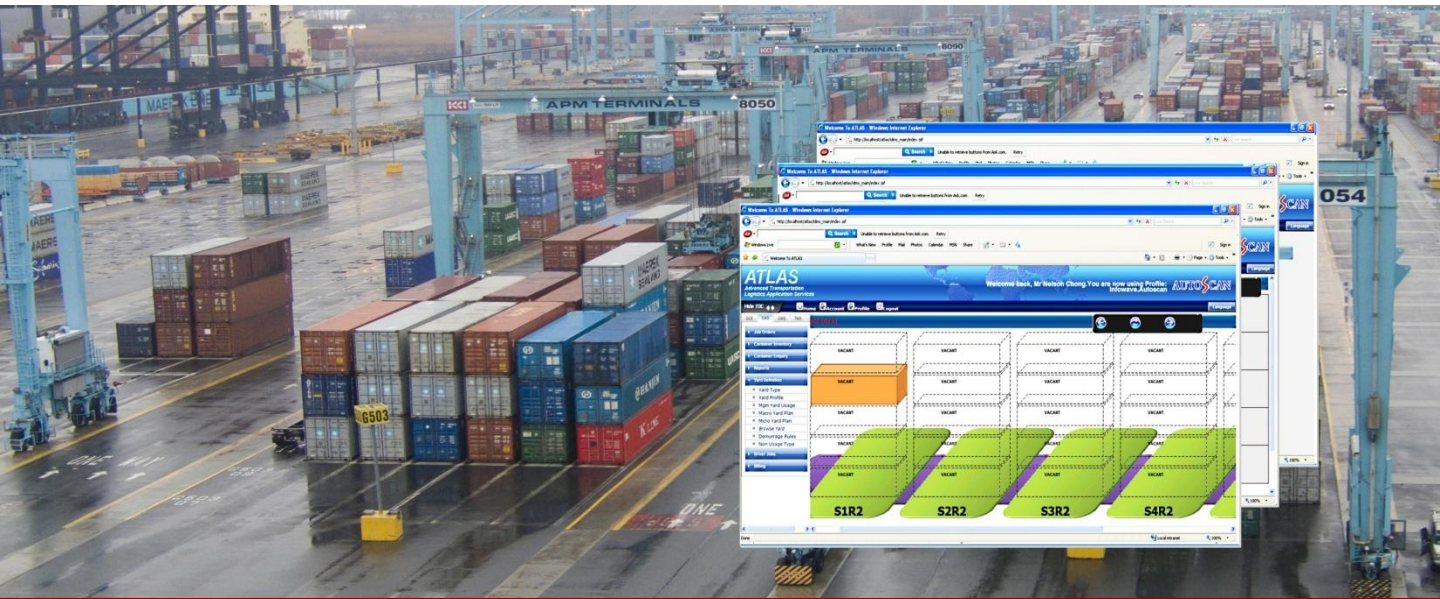


Enterprise Class Container Yard Management System

Improve container assets visibility and achieve measurable operational efficiency



ATLAS™ Container Yard Management System

Key Features

- Supports Popular Database Platforms
- Configurable EDI Messaging Format
- Deployable across Different Container Yards and Offices
- Multi-language User Interface
- Seamless Integration with RFID, Telematics and Wireless Technologies
- Rich Standard and User Configurable Reports

Standard Modules

- System Administration
- Yard Storage Management
- Report Generation and Dashboards

ATLAS™ Container Yard Management System (CMS) is a cutting-edge management system designed to help port and container operators achieve better container assets visibility, accuracy and measurable operating efficiency.

ATLAS™ CMS supports integration with RFID, telematics and wireless technologies to track and identify containers and support daily operations, including real-time job dispatches to haulers – all with the aim of improving overall container yard productivity goals and transactional volume growth.

With its unique application design, ATLAS™ CMS supports popular database platforms, including Oracle® and Microsoft® SQL to suit the operational volume and budget constraints of various business owners.

ATLAS™ CMS also features a configurable electronic data interchange (EDI) messaging format to facilitate data exchanges between third party systems, as well as to reduce costly data errors arising from disintegrated systems and manual entries.

Built with the needs of container yard operations managers and supervisors in mind, ATLAS™ CMS also provides rich standard and user configurable reports and graphical dashboard tools to support informed decision-making.

For large enterprises, ATLAS™ CMS can now be easily deployed across different container yards and offices spread across different geographic territories.



About ATLAS™ Solution Suite

Autoscan Technology's ATLAS (Advanced Transportation-Logistics Application Services) suite of supply chain solutions includes Warehouse, Container Yard and Transport Management Systems. These systems can be implemented with automatic identification and data capture (AIDC) and radio frequency identification (RFID) devices to provide real-time asset tracking capabilities, which in turn create transparency and visibility throughout the entire supply chain.

About Autoscan Technology

Since 1992, Autoscan Technology has helped companies to define strategies, streamline processes, and implement systems with its innovation and thought leadership in supply chain management, AIDC and RFID technologies.

Main Office

Autoscan Technology Pte Ltd
[Co. Regn. No.: 199204424D]
600 Sin Ming Avenue
4th Floor CityCab Building
Singapore 575733
Tel: (65) 6210-6390
Fax: (65) 6210-6389
Email: info@sg.autoscan.biz
URL: www.autoscan.biz

Malaysia Office

Autoscan Technology Sdn Bhd
D-1-11, NO.2, Jalan Pju, 1A/41B,
Pusat Dagangan Nzx, Ara Jaya Pju
1A, 47301 Petaling Jaya,
Selangor, Malaysia
Tel: +603-7885-8330 / 20
Fax: +603-7885-8340
Email: info@my.autoscan.biz

China Office – Suzhou Industrial Park

Autoscan Technology Co. Ltd
Room 1&2, Blk A #06-06,
No. 5 Xinghan St,
Suzhou China 215021
Tel: +86-0512-6761-6728 / 38
Fax: +86-0512-6761-6758
Email: info@cn.autoscan.biz

China Office – Shanghai

Autoscan Technology Co. Ltd
Room 18B, Blk B,
The Regalia Building, No 29
Xiang Cheng Rd, Pudong New Area,
Shanghai, China 200122
Tel: +86-021-5831-2503 / 9291
Fax: +86-021-5830-5548
Email: info@cn.autoscan.biz

Copyright © 2010 Autoscan Technology Pte Ltd. All rights reserved. ATLAS is a registered trademark of Autoscan Technology Pte Ltd. All other names mentioned herein may be trademarks of their respective owners. We reserve the right to make changes or improvements to any of the products described in this document without prior notice.

Container Yard Modules

Voyage Schedule Capture

This module allows users to plan ahead by capturing information relating to incoming vessels' schedules and container storage orders.

Storing Order Management

This module captures container storage orders directly from customers' web entries or file transfers. It helps users to collect the necessary data for incoming containers and reduce the transactional queuing time.

Container Gate-in

This module allows users to receive and track incoming containers to the yard.

Container Survey Management

This module allows surveyors to update the system with their inspection results and photographic evidence of physical damages for newly received containers.

Delivery Order Management

This module allows users to create new customer's orders from various sources, including the web, file transfer or manual entries.

Container Gate-out

This module allows users to release containers from the yard based on the customer's booking orders.

Billing and Invoicing

Designed to support complex billing process, this module can support billing for different customers who are on different billing cycles. The invoices can easily be exported to common file formats such as Acrobat® PDF and Microsoft® Excel.

Report Generation and Dashboard Modules

Container Search and Listing

This module allows users to search for individual containers within the yard based on search criteria such as customer, container entry date or vessel number.

Container Yard Browsing

This module presents users with a 3D map view of the physical storage area, including details of empty slots and existing containers. This is aimed at helping users to develop a more efficient container yard space utilization plan.

Reports

This module provides rich standard and user configurable reports on yard operations. Some of the reports include aging summary, inventory movement, and service levels.

Dashboard

With this module, ATLAS™ CMS can present real-time information about yard operations in easy to read charts. These charts are useful for analyzing overall yard operations within a stipulated time frame.

System Administration Module

This system module allows the creation of master profiles for the enterprise and key users such as customers, shippers, owners, consignees, outsource contractors, haulers and master details for containers, vessels and calendar (often used for the calculation of demurrage and detention charges). In addition, this module allows the administrator to set access limits for different types of users, and show records of audit trails as part of system security enforcement.

Getting Started

ATLAS™ CMS is available today as a SaaS (Software as a Service) solution to enable small-to-medium sized container yard operators to experience the benefits it delivers with minimized cost of ownership and shorter implementation time frame. It is also available on a turnkey basis for larger firms. For more information on how ATLAS™ CMS can help you in improving your container handling and order fulfillment needs, please email info@sg.autoscan.biz.